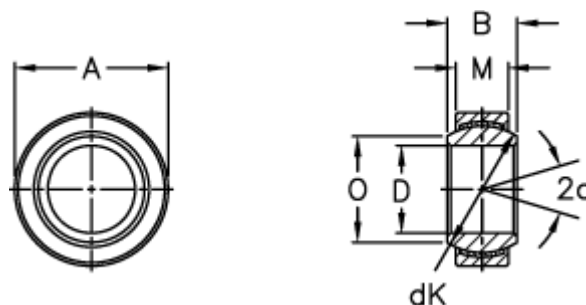


Article number: 03441050

Description: Fluro Rod end GE 50EC-2RS

Measures



A	= 75 0 -0,013	Tilt angle = 6
B	= 35	Weight = 540
D	= 50 0 -0,012	
dK	= 66	
Dynamic load C (kN)	= 295	
M	= 28	
O	= 55.9	
Static load C0 (kN)	= 590	